

SLATE WAY



DECORSTONE
GRES PORCELÁNICO
PORCELAIN TILES · GRÈS CÉRAMÉ

ALTO BRILLO SEMIPULIDO
GRES PORCELÁNICO SEMIPULIDO
SEMIPOLISHED PORCELAIN TILES · GRÈS CÉRAMÉ SEMIPOL



Slate Way Ash

| | | | | |
|------------|-------|------|--------------------|---|
| ● 60x120 | Rec. | M99 | 017.869.0344.11381 | Ⓜ |
| ● 60x120 | Rec. | M120 | 071.869.0344.11381 | Ⓢ |
| ● 60x60 | Rec. | M57 | 017.840.0344.11381 | Ⓜ |
| ● 60x60 | Rec. | M85 | 071.840.0344.11381 | Ⓢ |
| ● 30x60 | Rec. | M57 | 017.450.0344.11381 | Ⓜ |
| ● 30x60 | Rec. | M85 | 071.450.0344.11381 | Ⓢ |
| ● 30x30(7) | Malla | M201 | 025.590.0344.11381 | Ⓜ |
| ● 30x30(7) | Malla | M201 | 051.590.0344.11381 | Ⓢ |



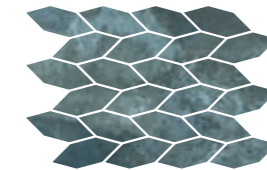
Slate Way Pearl

| | | | | |
|------------|-------|------|--------------------|---|
| ● 60x120 | Rec. | M99 | 017.869.0169.11381 | Ⓜ |
| ● 60x120 | Rec. | M120 | 071.869.0169.11381 | Ⓢ |
| ● 60x60 | Rec. | M57 | 017.840.0169.11381 | Ⓜ |
| ● 60x60 | Rec. | M85 | 071.840.0169.11381 | Ⓢ |
| ● 30x60 | Rec. | M57 | 017.450.0169.11381 | Ⓜ |
| ● 30x60 | Rec. | M85 | 071.450.0169.11381 | Ⓢ |
| ● 30x30(7) | Malla | M201 | 025.590.0169.11381 | Ⓜ |
| ● 30x30(7) | Malla | M201 | 051.590.0169.11381 | Ⓢ |



Slate Way Ocean

| | | | | |
|------------|-------|------|--------------------|---|
| ● 60x120 | Rec. | M99 | 017.869.0171.11381 | Ⓜ |
| ● 60x120 | Rec. | M120 | 071.869.0171.11381 | Ⓢ |
| ● 60x60 | Rec. | M57 | 017.840.0171.11381 | Ⓜ |
| ● 60x60 | Rec. | M85 | 071.840.0171.11381 | Ⓢ |
| ● 30x60 | Rec. | M57 | 017.450.0171.11381 | Ⓜ |
| ● 30x60 | Rec. | M85 | 071.450.0171.11381 | Ⓢ |
| ● 30x30(7) | Malla | M201 | 025.590.0171.11381 | Ⓜ |
| ● 30x30(7) | Malla | M201 | 051.590.0171.11381 | Ⓢ |



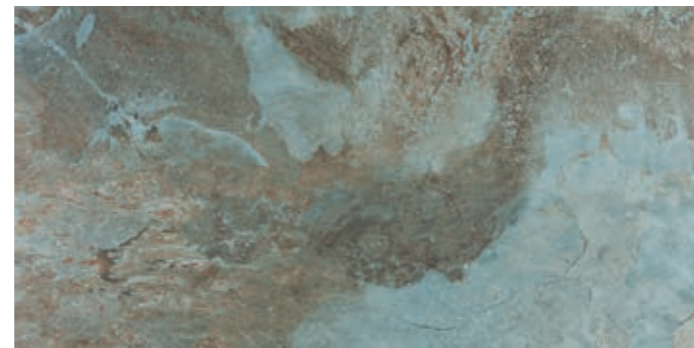
Malla Coimbra Slate Way 29x38

| | | | |
|---------|-----|--------------------|---|
| ● Brown | P38 | 051.936.0109.11381 | Ⓢ |
| ● Ash | P38 | 051.936.0344.11381 | Ⓢ |
| ● Green | P38 | 051.936.0110.11381 | Ⓢ |
| ● Ocean | P38 | 051.936.0171.11381 | Ⓢ |
| ● Pearl | P38 | 051.936.0169.11381 | Ⓢ |



Slate Way Brown

| | | | | |
|------------|-------|------|--------------------|---|
| ● 60x120 | Rec. | M99 | 017.869.0109.11381 | Ⓜ |
| ● 60x120 | Rec. | M120 | 071.869.0109.11381 | Ⓢ |
| ● 60x60 | Rec. | M57 | 017.840.0109.11381 | Ⓜ |
| ● 60x60 | Rec. | M85 | 071.840.0109.11381 | Ⓢ |
| ● 30x60 | Rec. | M57 | 017.450.0109.11381 | Ⓜ |
| ● 30x60 | Rec. | M85 | 071.450.0109.11381 | Ⓢ |
| ● 30x30(7) | Malla | M201 | 025.590.0109.11381 | Ⓜ |
| ● 30x30(7) | Malla | M201 | 051.590.0109.11381 | Ⓢ |



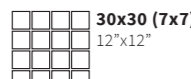
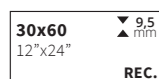
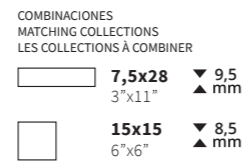
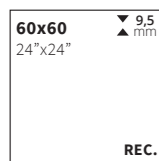
Slate Way Green

| | | | | |
|------------|-------|------|--------------------|---|
| ● 60x120 | Rec. | M99 | 017.869.0110.11381 | Ⓜ |
| ● 60x120 | Rec. | M120 | 071.869.0110.11381 | Ⓢ |
| ● 60x60 | Rec. | M57 | 017.840.0110.11381 | Ⓜ |
| ● 60x60 | Rec. | M85 | 071.840.0110.11381 | Ⓢ |
| ● 30x60 | Rec. | M57 | 017.450.0110.11381 | Ⓜ |
| ● 30x60 | Rec. | M85 | 071.450.0110.11381 | Ⓢ |
| ● 30x30(7) | Malla | M201 | 025.590.0110.11381 | Ⓜ |
| ● 30x30(7) | Malla | M201 | 051.590.0110.11381 | Ⓢ |



Rvto. / Wall / Rvrm.: Slate Way Green 60x120 Decorstone - Eleganza Terra 60x120
Pvto. / Floor / Sol: Slate Way Green 60x120 Decorstone

Formatos / Sizes / Formats



Malla Coimbra Slate Way
29x38
12"x15"

COMBINACIONES
MATCHING COLLECTIONS
LES COLLECTIONS À COMBINER

Disponible en / Available in / Disponible:
SLATE WAY 7,5x28 - 15x15 - Cat. ORIGIN



Piezas especiales / Special pieces / Pièces especiales

Consultar en página / Consult on page / Consulter en page: 314

| *Peldaño Gradone | *Ángulo Gradone | *Peldaño Ranurado | *Ángulo Ranurado | *Rodapié C/Romo | *Rodapié Dec. |
|------------------|-----------------|-------------------|------------------|-----------------|---------------|
| | | | | | |

Alto Brillo Semipulido

Empaquetado / Packaging / Emballage

| Formato | pz/cj | m ² /cj | cj/pl | m ² /pl | kg/cj | kg/pl |
|---------------|-------|--------------------|-------|--------------------|-------|----------|
| 60x120 | 2 | 1.44 | 32 | 46.08 | 34.25 | 1,121.00 |
| 30x60 | 6 | 1.08 | 48 | 51.84 | 23.60 | 1,152.80 |
| 60x60 | 4 | 1.44 | 30 | 43.20 | 31.50 | 965.00 |
| 30x30(7) | 11 | 1.00 | 42 | 42.00 | 23.10 | 990.20 |
| 29x38 Coimbra | 9 | - | - | - | 20.70 | - |