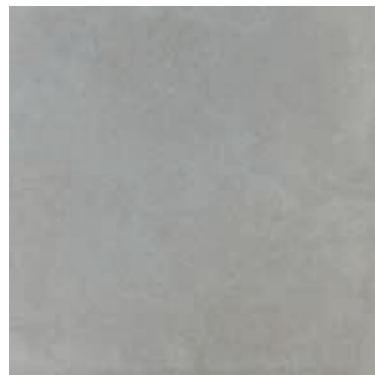




### Mosel Sand

- 90x90 Rec. M86 017.804.0119.11497
- 60x60 Rec. M51 017.840.0119.11497
- 45x45 M41 015.302.0119.11497



### Mosel Ash

- 90x90 Rec. M86 017.804.0344.11497
- 60x60 Rec. M51 017.840.0344.11497
- 45x45 M41 015.302.0344.11497



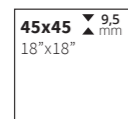
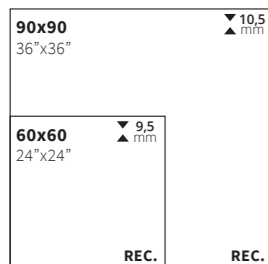
### Mosel Grey

- 90x90 Rec. M86 017.804.0161.11497
- 60x60 Rec. M51 017.840.0161.11497
- 45x45 M41 015.302.0161.11497



Rvto. / Wall / Rvrm.: Plain Black 120x260 - Plain White 120x280  
Pvto. / Floor / Sol: Mosel Grey 90x90

### Formatos / Sizes / Formats



Disponible en / Available in / Disponible:  
MOSEL 60,5x60,5(20mm)Rec. / 60x90(20mm)Rec.  
MOSEL 20x20(20mm) / 20x30(20mm)



### Piezas especiales / Special pieces / Pièces especiales

Consultar en página / Consult on page / Consulter en page: 314

*Peldaño Gradone	*Ángulo Gradone	*Peldaño Ranurado	*Ángulo Ranurado	*Rodapié C/Romo

### Empaquetado / Packaging / Emballage

Formato	pz/cj	m <sup>2</sup> /cj	cj/pl	m <sup>2</sup> /pl	kg/cj	kg/pl
90x90	2	1,62	27	43,74	40,00	1,110,00
60x60	4	1,44	30	43,20	31,50	965,00
45x45	6	1,22	52	63,44	25,80	1,361,60



**Mosel Sand**

- 90x90 Rec. M165 017.817.0119.11497
- 60,5x60,5 Rec. M128 017.701.0119.11497



**Mosel Ash**

- 90x90 Rec. M165 017.817.0344.11497
- 60,5x60,5 Rec. M128 017.701.0344.11497



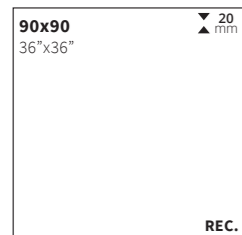
**Mosel Grey**

- 90x90 Rec. M165 017.817.0161.11497
- 60,5x60,5 Rec. M128 017.701.0161.11497

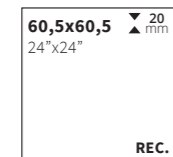


Plato. / Floor / Sol: Mosel Ash 90x90 (20MM)

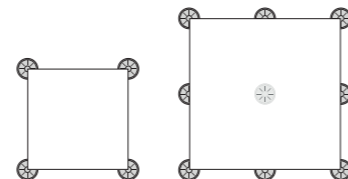
**Formatos / Sizes / Formats**



**Disponibile en / Available in / Disponible:**  
 Mosel 90x90 / 60x60 / 45x45 - Cat. UNIVERSE



**Colocación mínima recomendada de plots.**  
 Placement of the minimum recommended plots.  
 Placement des plots minimums recommandés.



**Empaquetado / Packaging / Emballage**

Formato	pz/cj	m <sup>2</sup> /cj	cj/pl	m <sup>2</sup> /pl	kg/cj	kg/pl
90x90(20MM)	1	0.81	27	21.87	38.80	1,077.60
60,5x60,5(20MM)	2	0.73	30	21.90	31.40	962.00