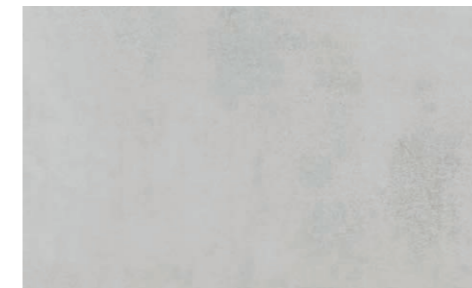


Civis 33,3x55

RVTO. PASTA ROJA
RED BODY WALL TILES · REVÊTEMENT PÂTE ROUGE



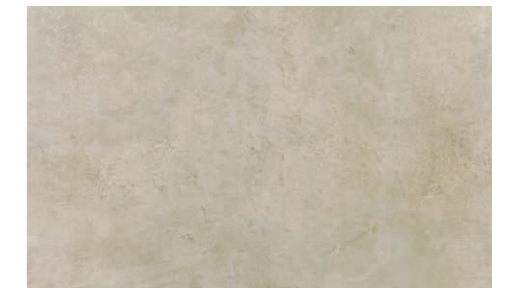
Rvto. / Wall / Rvtn: Civis Perla 33,3x55 - Rlv.Civis Perla 33,3x55
Pvto. / Floor / Sol: Civis Perla 90x90



Civis Perla



Civis Ceniza



Civis Beige



Rlv.Civis Perla



Rlv.Civis Ceniza



Rlv.Civis Beige

Formatos / Sizes / Formats

33,3x55
13"x22"
± 8,8 mm

21

RED BODY

90x90 Rec.
36"x36"
± 9 mm

9

60x60 Rec.
24"x24"
± 9,5 mm

11

60x120 Rec.
24"x48"
± 9 mm

22



Cód. tarif.
33,3x55 RED14
33,3x55 Rlv. RED13

60x120 Rec.
24"x48"

90x90 Rec.
36"x36"

60x60 Rec.
24"x24"

GRES PORCELÁNICO ESMALTADO
GLAZED PORCELAIN TILES · GRÉS CÉRAMÉ ÉMAILLÉ



At. Civis Perla PEI 4

● 60x120	Rec.	M57	017.250.0037.09724	
● 90x90	Rec.	M73	015.090.0037.09724	
● 60x60	Rec.	M51	017.840.0037.09724	



At. Civis Beige PEI 4

● 60x120	Rec.	M57	017.250.0007.09724	
● 90x90	Rec.	M73	015.090.0017.09724	
● 60x60	Rec.	M51	017.840.0017.09724	



At. Civis Ceniza PEI 4

● 60x120	Rec.	M57	017.250.0019.09724	
● 90x90	Rec.	M73	015.090.0019.09724	
● 60x60	Rec.	M51	017.840.0019.09724	

Piezas especiales / Special pieces / Pièces especiales

Consultar en página / Consult on page / Consulter en page: 162

*Peldaño Gradone	*Ángulo Gradone	*Rodapié C/Romo

Empaquetado / Packaging / Emballage

Formato	pz/cj	m ² /cj	cj/pl	m ² /pl	kg/cj	kg/pl
60x120	2	1.44	36	51.84	29.50	1,091.00
90x90	2	1.62	32	51.84	33.00	1,081.00
60x60	4	1.44	30	43.20	31.50	965.00



Pvto. / Floor / Sol: At. Civis Ceniza 90x90